

Disney®



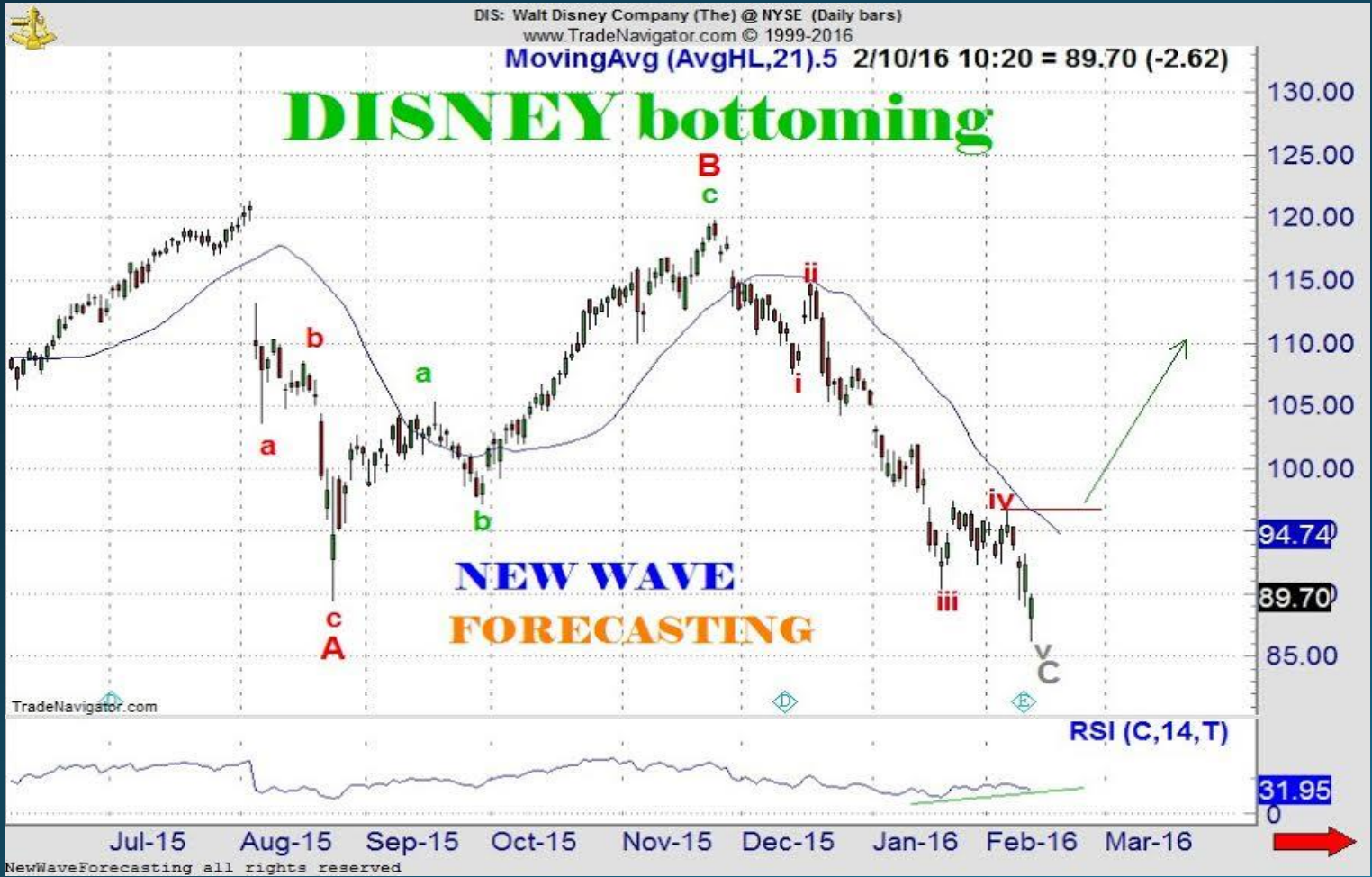
2.10.16

Disney 90.75 probable bottom



It seemed pretty "out there" when I presented the case for a bottom in Disney and all I can say is the name opened on its low today and has been in the green for some time. IF the market turns up the mouseketeers should scurry on ahead.

Disney 89.70 High Risk Possible Shock Bottom



I have been "cuffing" this chart for a while and it points to a bottom essentially right now. Today's earnings has undoubtedly touched off massive volume but prices are well above the open and even further from the low. A gap up tomorrow would be fabulous and we'll see how it closes the day.